



KINGSDOWN MESSENGER



October 2015



SERVICES FOR OCTOBER

- 4 Oct 10.30 Ms Christina Tom-Johnson
6.00 Circuit Bible Study at Kingsdown
- 11 Oct 10.30 Rev Rachel Bending, Family/Parade Service
HARVEST FESTIVAL
- 18 Oct 10.30 Rev Rachel Bending, Holy Communion
Circuit Bible Study at Kingsdown
- 25 Oct 10.30 Rev Peter Catford



(Sermon Series for Kingsdown based on 'We Make the Road by Walking' by Brian McLaren commenced in September.)

Midweek Service

Thursdays, at 12.30 pm, Kingsdown will host a weekly short Meditative Service lasting a half to three quarters of an hour. This will be followed by a bread and cheese lunch and 'Open House' when the church will be open to all-comers.

Circuit Discipleship

Circuit Bible Studies at Kingsdown are included in the Quarterly Preaching Plan and further studies will be on 4 and 18 October, and 1 & 15 November. All are invited.



The KINGSDOWN MESSENGER

Copy deadline for the November 2015 issue is Friday 23 October 2015

Editors - Pam and Alan Smith

Tel: 020 8840 4803 E-mail: magazine@kingsdownmethodist.org.uk



Dear friends

For weeks our news has been full of the stories of refugees and other migrants flooding from places of danger. Each individual of the thousands who've struggled to travel has their own unique story, their own reasons for fleeing and their own unique identity as a child of God, God's masterpiece. There have been debates about compassion, justice and which countries should give them a home. The arguments are complex and varied but the compassion we feel as we watch our brothers and sisters in such extreme circumstances is real and powerful.

Desmond Tutu in writing of the apartheid system said that when we deny the humanity of another human being we lose our own humanity. As I looked at the photograph of the small child that appalled so many, caused such an outcry and spurred many to respond, I wondered why it had taken such an extreme image for us to remember our common humanity and to respond as family rather than to seek to protect ourselves.

Elsewhere in this magazine you will find details of ways to help and the response of the European Methodist Council, but I close with a reflection on that photo by the former President of the Methodist Conference, Rev Ruth Gee:

Lament for Aylan

Posted on [3 September 2015](#) by [Joint Public Issues](#)

So small, so still
So beautiful in life
So unbearable in death
Carried by the sea
Carried by our tears
Carried gently in strong arms.

O God
Open the eyes of those with power
To see your children in their desperate need;
Open the arms of those in government
To welcome those who come to our shores;
Open the hearts of each one of us –
Move us to sorrow, anger and action
That the salt sea of sorrow

May be turned to soothing waters
And that tears of desperation
May become tears of joy.
O God, help your people.

Aylan Kurdi, aged 3, from Kobani was washed up on a Turkish beach near Bodrum in September 2015. He was just one of thousands fleeing for safety from Syria and other parts of the world.

The local fisherman who discovered his body among others on the beach said, "I came to the sea and I was scared. My heart is broken."

**Written by Revd Ruth Gee, former President of the Methodist Conference
With prayers for you, those you love and all God's children**

What does the Lord require of us?

Posted on [5 September 2015](#) by [Joint Public Issues](#)

Revd Phil Jump offers some reflections in response to the refugee crisis.

Our faith identity is rooted in stories of migration. Abraham left his home in Ur in response to God's call and promise – and the story of Moses and the Exodus remains a defining narrative for Jews and Christians alike. God's response to a people group who are being oppressed, threatened and mistreated is to commission leaders to take them to a place of safety. God wants people to have a home:

Exodus 3: 7 The LORD said, 'I have indeed seen the misery of my people in Egypt. I have heard them crying out because of their slave drivers, and I am concerned about their suffering.
8 So I have come down to rescue them from the hand of the Egyptians and to bring them up out of that land into a good and spacious land, a land flowing with milk and honey – the home of the Canaanites, Hittites, Amorites, Perizzites, Hivites and Jebusites. 9 And now the cry of the Israelites has reached me, and I have seen the way the Egyptians are oppressing them.
10 So now, go. I am sending you to Pharaoh to bring my people the Israelites out of Egypt.

The Old Testament Exodus is a difficult story, because it involves taking the land by force – driving out people – perhaps with echoes of what is happening in some parts of the Middle East. But God makes clear that the nation he wants to establish is to be a nation of welcome – stories like that of Ruth underline this, but it is riven into the teachings of the Old Testament law – for example:

33 “When a foreigner resides among you in your land, do not ill-treat them. 34 The foreigner residing among you must be treated as your nativeborn. Love them as yourself, for you were foreigners in Egypt. I am the LORD your God.

We are called to be a Holy people – a people who are visibly different – who live by different values – the values of God’s Kingdom. There are those who are uneasy about the migrant crisis – might we be worse off financially if we open our doors to others? Might this affect our sense of identity? We cannot answer these questions easily, but we are a HOLY PEOPLE – our first calling is to “seek the Kingdom of God” – God’s values and message are clear.

God’s people are called to respond differently:

Acts 2: 42 They devoted themselves to the apostles’ teaching and to fellowship, to the breaking of bread and to prayer. 43 Everyone was filled with awe at the many wonders and signs performed by the apostles. 44 the believers were together and had everything in common. 45 They sold property and possessions to give to anyone who had need. 46 Every day they continued to meet together in the temple courts. They broke bread in their homes and ate together with glad and sincere hearts, 47 praising God and enjoying the favour of all the people. And the Lord added to their number daily those who were being saved.

These verses describe the life of the early believers – we can see important elements of our faith identity within them:

- Devotional – they worshipped, prayed, learned and experienced the power of God together
- Missional – they attracted others and grew
- But we cannot ignore a vital element that is intrinsic to their life as believers:
- Generosity and Hospitality. – they opened their homes, sold their property and took the values of God’s Kingdom seriously. We can’t avoid this – it’s not an optional extra, it lay at the heart of what it meant to be a follower of Jesus. When we close our hearts to those in need, when our own self-interest is more important – we have lost sight of what it means to follow Jesus – Acts 2 offers us no alternative conclusion.

God's People know the reality of persecution:

In Acts 1:8 – Jesus predicts that his followers will be witnesses throughout Judea, Samaria and to the ends of the earth. Although we often focus more on Matthew 28 – these words of commission are central to our evangelical identity.

In Acts 8:1 – we read of how this commission is fulfilled – The Early Christians become persecuted refugees, fleeing for their lives and seeking sanctuary wherever they can find it. How should those whose history is so rooted in persecution and migration respond when they are now in a position to offer safe havens and hospitality?

As a Baptist Community, of which I am a member, we are no strangers to this reality. The early Baptists fled from the United Kingdom and established themselves in Amsterdam and other parts of Europe where there was welcome and safety. We would not exist today as a Baptist People if there had not been those who were willing to offer havens of safety to our forebears. This is the background against which we are now called to respond – what does God require of us?

Phil Jump Liverpool – September 2015

Rachel

A big 'Thank You' from one and all

There was a good turn out for the Garden Party hosted by Rachel and Tom at the Manse after the service on 20 September, with delicious food and sunshine all the way - a very happy occasion, with an opportunity for socialising and getting to know one another; plus lots of apple picking from a tree in the garden going on!





Dear Sisters and Brothers,

We have met, as the European Methodist Council, in recent days in Bulgaria near the crossing-point with Romania. As Methodist representatives from all over Europe, much of our time has been spent in conversation on migration in light of the reality of hundreds of thousands of desperate people crossing the borders of Europe, fleeing conflict and persecution and seeking the possibility of a future for themselves and their children. We have prayed together and been strengthened in our fellowship in the Methodist family. We have drawn hope and inspiration from stories of Methodists working in many places to assist migrants and refugees. Often these are small groups of our sisters and brothers tirelessly fulfilling our common commitment to Christian hospitality and care. We give thanks to God for their vision, courage and continuing service in the name of Christ. May we all draw inspiration from their example.

In renewing our fellowship, we have recognised our differences and drawn strength from the knowledge that our primary identity comes through our union with Christ which transcends ethnicity and nationality and is always open to receive those who differ or disagree. We have been reminded, through study of the Scriptures, that the people of God have often been on a journey and frequently known what it is to be outsiders and even refugees. We have been challenged to recognise the neighbour rather than fear the stranger. However, the experiences we have shared show our tendency to forget the commandment to love when God unexpectedly gives us new neighbours.

We know that migration raises a complex set of issues that cannot be solved with simplistic solutions. We struggle together as Churches whose members continue to hold a variety of political and theological views. We seek to move beyond a sterile discussion about the rightness of migration to engaging with the many complicated issues involved in the crisis affecting our continent. In all this, we are aware of our own limitations and the need of the help of others.

The following general principles are offered as a basis for further conversation and action as Churches seek to formulate a co-ordinated response from their members.

We are called to:

- renew our understanding and practice of the obligation to radical Christian hospitality to all, recognising the practical implications for congregations and individuals
- acknowledge that migration has and always will be a part of the human story
- recognise that we experience and interpret the reality of migration to and within Europe in different ways, depending on our context

- resist false narratives, generalizations and negative stereotyping and challenge those who would play on people's fears
- reaffirm our Christian commitment to honour Christ in the face of the stranger regardless of religious background or the prevailing political situation
- encourage and support those who dare to open their doors and offer hospitality to those in need
- pledge both our continuing solidarity with those parts of world from which migrants and refugees come and our active engagement to achieve a just and peaceful world.

God calls us to continue our journey together. We believe that God also calls us to welcome those who arrive as our fellow pilgrims. We commit ourselves to immediate actions and the long-term perspectives that the issues raised by migration require. With a united voice, the European Methodist Council calls on our fellow citizens across the continent to join us in reflection and action.

May Christ bless us all, as we seek to faithfully express and reflect his love and mercy in our lives and ministry.

Don Kerr and Christian Alsted

Co-chairs of the European Methodist Council

Who is my neighbour?

When I talk of neighbour, Lord, I mean the families nearby who I might, or might not, get on with.

When you talk of neighbour, you extend our neighbourhood to the whole world - to all kinds of people, the old, the young, the good, the bad and those from different social and ethnic groups.

I see them on my television screen and just know if they happened to move in next door I couldn't get on with them.

But then, that is your challenge to us, isn't it? To do as you did; to extend the hand of love unconditionally, with no strings of prejudices attached.

I can't do that, Lord, it's not in my nature.

But I'm convinced you can do it through me.

FAMILY NEWS

Doreen Winston writes: "My best wishes to all my friends at Kingsdown and a big 'Thank You' for all your prayers, cards, presents and kind wishes during my recent stay in hospital. With all my Christian love." Its been lovely to see Doreen back with us in such a relatively short time after her operation - a very determined lady! The Kingsdown family hope you maintain steady progress on your road to recovery Doreen.

Margaret Trice writes: "My thanks to everyone for their kindness in welcoming my mother, Ann Keable, to Kingsdown during her four years in Ealing, and for the ongoing interest in her welfare. It is much appreciated.

As most of you know, Ann is now living in residential care in Greater Manchester, just 10 minutes walk from my brother's home. She is well settled and extremely well cared for. As a consequence of the move, her flat in Mayo Court will shortly be put on the market. Should anyone over the age of 55 be thinking of down-sizing, or considering a move to more secure accommodation, and would like to see an example of what is available, please give me a ring. I should be happy to show you round at a mutually convenient time. My 'phone number is 020 8579 4006 (evenings are best), but please avoid 9-25 October (inclusive).

Again, thank you from both Ann and me for your continued love and prayers."

A Big Thank You...

to all those kind volunteers who get involved in the complicated events that are Kingsdown's Book Fairs. Starting with committee discussion, through arranging for the advert to appear in the local paper, to putting up the tables and hauling out the trays of books, setting up and manning the stalls, taking the money at the door, tea/coffee bar/washing up: then putting everything back in store - its a mammoth operation all master-minded by **Ruby Warne** for so many years. What a team effort - so well done!

Alan and Pam Smith are particularly grateful for the latest efforts on behalf of the 'All We Can' fund raising event that took place on Saturday, 26 September. The total amount raised has not yet been finalised but is in the region of £408.00, and will be sent to the 'All We Can' office, together with the contents of the recent envelope appeal when known.

Harvest Festival & Charity of the Year 2015-16



St David's Nursing Home in Pitshanger has been selected as the Kingsdown Charity of the Year for 2015/16. It is the home where Peter Loveridge spent the last 3 months of his life, and where several members have or have had friends and family members in residence at different times.

Another recent contact with the home has been when Kathleen Loveridge sought support for the residents by requesting items for their autumn fair, materials for making Christmas decorations, and volunteers to knit woolly hats for the female residents when they go out in cold weather.

The staff at Staff David's have been very grateful for what they have received so far - the hats have had their first outing! - and are thrilled to know that the home has been identified as our Charity of the Year, and that they might hear some of our children and young people singing Christmas carols later in the year.

As is our usual practice, we are hoping that members will consider offering harvest gifts this year that could be sent to the CoTY. These include any items that can be sold at the Christmas Fair which attracts a lot of support from residents' friends and family members, and from the staff. They are also always grateful for monetary gifts which pay for outings for some residents in the summer months, and for professional musicians and music therapists whose work provides exceptional pleasure and mental and emotional stimulation for many of the residents.

So please give generously on Harvest Sunday - 10 OCTOBER 2015 - to our Charity of the Year, St David's Nursing Home.

Thanks, Kathleen.

(See p. 18 for proposals for decorating the church on the Saturday.)

Today is the tomorrow you worried about yesterday.

From the Church Council

The most recent Church Council meeting was held on 17th September and was attended by 13 members of the Council (out of a total of 24) along with Deacon Lemia Nkwelah.

Deacon Lemia gave the meeting an outline of the Circuit's MHA Live at Home Scheme. The idea for setting up the scheme had come from an identified need in the community for services for older people to help reduce isolation and loneliness. The scheme was launched in May and a part-time manager, Sonia Dhama has been appointed. She is based at Greenford. It is also planned to appoint an assistant manager. The scheme currently has 12 members and 6 volunteers.

The scheme is planning to offer a lunch club at Greenford, 'grow and eat' gardening – produce would also be sold in a scheme shop, yoga and a befriending service. It is also hoped that where churches are already running activities for older people, these could be incorporated into the scheme, although this would not be obligatory.

Churches are asked to publicise the Live at Home Scheme – if you would like to know more, or to get involved either as a member or a volunteer, contact Deacon Lemia on

020 8575 5463 or e-mail lemmynkwelah@gmail.com or Sonia Dhama on 020 8813 9519 or e-mail ealing.liveathome@mha.org.uk.

Our new Church Treasurer, Derek Matthews reported to the meeting that Kingsdown had ended the 2014-15 financial year with a surplus of about £21,000. Although congregational offerings had fallen during the year, lettings income had been very strong and the new formula for the assessment churches pay to the Circuit had reduced our outgoings. However, much of this surplus was likely to be needed to pay for major items of repair to the church buildings.

The budget for the coming year was agreed by the meeting. We also need to agree a formal Reserves Policy – how much money the church should hold against 'rainy days'. This is a requirement that we have not fully addressed in the past.

Janet Smith reported to the meeting that the hall floor had been sanded and re-sealed during the summer along with re-decoration of the hall annex – if you haven't seen how the hall now looks, go and see it. Repairs are required to the hall roof and the meeting agreed

expenditure of £1,000 to carry out the work.

Janet pointed out that the following items of work would need addressing in the coming years:

- The south side of the church roof – some re-tiling or possible complete replacement
- Refurbishment of the Crittall windows in the church
- Redecoration of the church interior.

Janet is also looking for a sign-writer who can replace the missing 'G' in the external church name (if you haven't noticed, take a look) and to remove the evening service time from the main external noticeboard.

Some small items of expenditure were agreed by the meeting – for 10 cushions for children to sit on at the front of the church, and for 5 low folding tables for use by Babies & Toddlers and others.

The search for a new regular organist continues and Gerald Barton said he was going to re-advertise the post. In the meantime, Matt Condon, who has played for us a couple of times recently has agreed to play about once a month.

On worship matters, Rachel reminded the meeting about the new midweek service on Thursdays at 12.30pm. The service lasts about 30 minutes and is followed by a bread & cheese lunch. The Memorial Service (aka the Bereavement Service) this year will be on 6th December. Lodge Bros (funeral directors) will advertise the service to their clients and will fund refreshments. Volunteers were requested to assist Rachel. It was also agreed that a real Christmas tree be put in the church in time for the Memorial Service. Attendees will be invited to hang the names of people to be remembered on the tree.

Our Boys Brigade company will celebrate its 50th anniversary in 2016. The meeting agreed that there should be a special parade service to be followed by lunch. Rachel will arrange a suitable date with the BB Captain, Tony Plews.

It was agreed that Charity of the Year for 2016-17 will be St David's Home, Ealing (where Peter Loveridge had lived). The home will be very happy for Young Church to send residents Christmas cards, and they would also appreciate carol singing. In addition, the meeting decided to maintain our annual donations of £1,000 to the Methodist World Mission Fund and

£200 to the Methodist Ministers Fund

Following a decision at the recent Circuit Meeting, Rachel told the meeting that the Circuit is looking to appoint a paid Finance Officer to support the Circuit Treasurer and church treasurers. A meeting of church treasurers on 7th October will consider what support churches want from the new Finance Officer. Also, the Circuit has entered the 'stationing process' to find two presbyters to replace Peter and Suva Catford when they leave at the end of July next year.

Rachel reported that Splash & Dash, the pre-school group that uses our premises are in difficulty this term because of low numbers of children. This was partly because local schools were able to offer significant numbers of low-priced places, and also because there had been insufficient advertising for the group.

The meeting agreed that Splash & Dash could place a banner under

the main external signboard. Splash & Dash offers pre-school activities for children aged 2 – 5 years four mornings a week. If you know people with children who might be interested, send them along!

Don't forget the Barn Dance on 17th October. Tickets are £5/adult and children (under 18 or in full time education) free and can be obtained from Rachel. A light meal will be served. Profits will go to support Kingsdown's mission.

Finally, Northfields Traders Day (or maybe, evening) will be held either during the last week in November or the first week in December – the date is yet to be confirmed. As usual, we hope to open the church for the event.

The next meeting of the Church Council will be on Tuesday 1st December at 8.00 pm.

Gerald Barton
Secretary to Church Council

One person with a steadfast belief is worth more than a force of ninety nine who only have an interest.

From: "Rebecca Brookman"

Subject: Refugee Crisis - What's happening locally?

Dear friend of Near Neighbours West London,
I am emailing you with some information from some organisations we have had engagement with relating to the current refugee crisis and how you or your community group/place of worship can get involved in supporting refugees either directly or indirectly. I am sure many of you will be wanting to get involved or perhaps already are involved, so I hope this information is of additional use. If you have something happening in your area (collecting supplies, donations, awareness raising etc.) that Near Neighbours West London could help publicise, then I would love to hear from you too. Please do get in touch and I will do my best to help spread the word through email and social media.

Thanks and best wishes, Becky Brookman (West London Coordinator)
beckyb@kingscentresouthall.org.uk

Citizens UK

Community organising network Citizens UK are working nationally with groups and local authorities to try and get Syrian refugees resettled in local areas. You can see a helpful guide they've made a about how you can get involved here

http://www.citizensuk.org/resettlement_campaign_local_organising_guide

Crucially, they need to identify useable rental properties, with landlords who may willing to accept local housing allowance rates. Do you own or know a landlord who owns property that may be suitable to house a family? Sign up here, and please spread the word!

http://www.citizensuk.org/help_find_homes_for_syrian_refugees

Refugee Support Network

[Refugee Support Network](#) works with young people affected by displacement and crisis, enabling them to access, remain and progress in education at multiple stages in the migration



journey. Here are two practical ways you can support refugees in the UK through RSN:

1. **Volunteer**: If you want to help an unaccompanied teenager who's made it to UK, get in touch with :

Carolyn Burke (cburke@refugeesupportnetwork.org)

to find out how to become a volunteer educational **mentor** with Refugee Support Network

2. **Donate**: Currently we work with 300 young people but with approximately 3,500 unaccompanied minors in the UK, and the likelihood of many more arriving soon, there is so much more we could do. We're a small charity so every penny raised or donated makes a huge difference to our work. By fundraising, donating and spreading the word, you will help us transform lives.



Summer maintenance

Over the past few months numerous works have been carried out on Church premises.

- Hall annexe redecorated
- Hall floor resanded and resealed.
- Skylight in Circuit office cleaned
- Shed re-roofed (under Russell Rm)
- Gutter replaced and outside wall repainted.

This is in addition to the general maintenance that is carried out on a yearly basis.

I would like to thank the Property Committee i.e. Derek Matthews; Kathleen Jarrett; Sue Garland; Les Goodchild; Kevin Lovell; Dave Lewis for all their assistance, particularly cleaning the Hall after the resanding.

Also, Hazel Pennells; June Thompson: Evelyn Sangster for their invaluable help in cleaning all the chairs and to Alan Smith for his prompt response with regard to the boiler.

Janet Smith

Kingsdown Methodist Church, Northfield Avenue, W13

BOOK FAIR



Books Cakes Gifts
Bric-a-Brac Raffle

**Saturday 31st
October**

10.00am to 12.30pm

Admission 40 pence

Proceeds to:



MHA Book Fair

A reminder about the book fair in aid of Methodist Homes on Saturday October 31st in the church hall with the usual stalls.



There will be books, cakes, gifts, bric-a-brac and a raffle. Maybe you will pick up a Christmas gift here for someone special?

Now's your chance to support the worthwhile charity of Methodist Homes, not forgetting that Ealing Trinity Circuit in association with MHA has launched a Live At Home scheme designed for all elderly people in the borough. See you there!

Olwen Britton

HARVEST BARN DANCE

17TH OCTOBER 2015, 7PM



KINGSDOWN METHODIST CHURCH HALL
KINGSDOWN AVENUE, NORTH ELDS

COME AND DANCE
TO THE MUSIC OF ALI, COLIN & THOMAS
DANCES EXPLAINED BY RACHEL

ALL WELCOME
NO EXPERTISE OR EXPERIENCE NEEDED

ADULTS £5
ACCOMPANIED CHILDREN FREE



Barn Dance at Kingsdown on Sat 17th October

You are invited to join Kingsdown at their Harvest Barn Dance on Saturday 17th October at 7.00 pm in the church hall. Come and dance to the music of Ali, Colin and Thomas who will be accompanying dances explained by Rachel. No expertise or experience required, just a desire to have fun! Tickets cost £5.00 (free for accompanied children up to 18 and anyone in full time education) and will include a light ploughman's supper.

For tickets contact Rachel on:

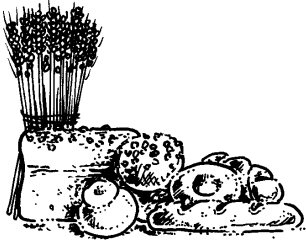
rachelbending@hotmail.com or call 07986 461787

The Kingsdown Messenger is available in electronic form via e-mail. All you need to do is send an e-mail to:

magazine@kingsdownmethodist.org.uk

With 'Messenger please' in the subject line!

HARVEST FESTIVAL

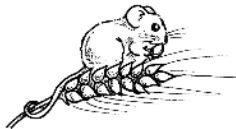


Our Harvest Service will take place on Sunday, 11 October. Our next 'charity of the year', is St. David's Nursing Home and, as you will see from Kathleen Loveridge's article (p.10), on this occasion the specific request is for suitable items for the bric-a-brac stall at the October Autumn Fayre held at St. David's.

This means that again there is a need for innovative ideas for the decoration of the church. Hopefully, the shelves in the church lend themselves to interpretation by church groups or individuals, backed up by anything of a 'harvest' nature to add an appropriate setting for the service. Greenery, perhaps with red berries, would be welcome, for a small table display next to the altar - put on your thinking caps!

If it helps, you may recall that the Home itself can also use donations of small quantities of sweets to be used as prizes for Bingo and other competition games; and also items for arts and crafts sessions (ie felt tip pens, coloured paper/card), as well as monetary donations.

Eileen Tobias (020 8567 4205) or Pam Smith (020 8840 4803) would welcome the names of volunteers willing to take up the challenge and, of course, look forward to seeing everyone on Saturday morning, 10 October, from 10 o'clock to assist in transforming the church. Hopefully, as usual, we shall have the benefit of Ivv Hanson's beautiful floral creations to enhance our own efforts.



Ealing Churches Winter Night Shelter at Kingsdown Sunday nights 29th Nov - 20th Dec

Offers of help on with any of the shifts or with other support such as advance catering or washing bedding and towels would be much appreciated by Sue Barton.(020) 8840 7704 or e-mail sue.garland6039@btinternet.com



KINGSDOWN'S BABIES & TODDLERS GROUP - WEDNESDAYS



This group operates from 1-3 pm every Wednesday during school term time and is fairly popular with mums, dads and carers as most other similar groups only open during the mornings.

We have a team of six volunteers on a regular basis (two serving refreshments/washing up) and four just to chat with the adults and act as extra pairs of eyes!; Rita Safta kindly comes along to help as well if her studies permit. We could however do with one or two additional helpers to fill in when, for whatever reason, one of us might need to be absent. It would be much appreciated if any of the Kingsdown family might be willing to make themselves available on an occasional basis.

If so, please have a word with:

Jill Richardson (tel: 8567 0634) or Pam Smith (tel: 8840 4803).



A witness in 'The Jungle'

The leader of the simple church erected in the so-called 'Jungle' refugee camp in Calais has said he no longer wants to get into the UK and believes God has put him in the camp for a reason. Miima, from Ethiopia, who has not revealed his full identity or background for security reasons back home, had previously been trying to cross the border but now says he's happy to stay and support the thousands who are living at the camp.

He said. "Maybe Jesus has brought me, so for me it's better than to go to England." What is often described as the 'migrant crisis' has split opinion in recent months. BBC Songs of Praise received criticism for broadcasting from the camp. In a message to British Christians, Mima called for support.

He said: "If you can, come and visit us and see. If you can't do that, pray for the immigrant people... the ones who are dying on the Mediterranean Sea, those who are dying on the train station when they try to go to England. All Christians need to pray for these people."

BB Online

In an attempt to keep up with the times, your Boys' Brigade Company has been opening up its own online resources. This enables us to direct parents of would-be members to the best and most current sources of information, and they can understand more of what the BB has to offer.



If you'd like to see what we're up to, you might enjoy the following sites:

www.10thEalingBB.com

This is our official Company website and features several pages of information about what we do, what we've done and what we're going to do soon. It's a good place to direct parents and Boys who are considering joining. There's also an archive page with photographs of lots of older members if you have an interest in that sort of thing.

www.facebook.com/10thEalingBB

For those of you who are members of Facebook, you might like to Like our page. It is updated with BB news at least once a week and has a wide remit regarding Kingsdown history and Old Boys too, with an archive going back to the early 1900s. Spend some time looking around -- it's fascinating.

www.youtube.com/channel/Ucqs4xdw0rdmslactnvhfwa

Finally, we now have our own YouTube channel containing several videos we've made ourselves to promote the Company, the Church and our activities.

Please drop me an e-mail if you'd like further information.

Tony Plews
tonyplews@sky.com

THE BATTALION SHOW

On Saturday 14th November, all of the West London BB Companies will be taking part in a special BB Show at William Perkins School (Band, Gym, Marching, etc) so please do mark this date now in your diary. The Band will be required during the afternoon for rehearsal and the show will be in the evening. More details to follow soon.



Methodist
relief and
development

Statement on the current refugee and migrant crisis

As the headlines continue to be dominated by news about refugees and migrants, All We Can has reaffirmed its commitment to supporting those who have fled the conflict in Syria, and to contributing to addressing some of the root causes of the crisis.

Maurice Adams, Chief Executive, commented: "Over recent days, many of us have been shocked and moved by tragic stories of the human impact of the escalating refugee and migrant crisis in Europe. Increasing numbers are enduring arduous journeys to escape war and persecution, or simply in search of a better life, only to encounter danger, suffering, hostility and even death. There are many complex reasons for this crisis, but its human cost is all too clear to see.

As an organisation grounded in Christian principles, we believe in the God-given value and potential of every human being, so anything which diminishes that is of concern. We also heed the Biblical call to respond unconditionally with compassion to those who are needy and vulnerable, the stranger and the orphan. Today we stand in prayerful solidarity with all who are suffering, and reaffirm our commitment to playing a part in addressing the crisis.

As we have done for the last two and a half years, we will continue to provide humanitarian support to those fleeing the conflict in Syria through our work with partner organisations in neighbouring countries. Donations to our Syria Appeal will particularly help our partners to improve conditions and prospects for people living in temporary accommodation in Jordan.

As All We Can's main focus is on working with partners in the poorest communities of the world's poorest countries, we are not presently engaged in a direct response to the needs of refugees and migrants within mainland Europe, but we commend the work being done by our sister agencies and churches in this area.

Through our long-term development and advocacy work, we also seek to make a contribution to addressing some of the root causes of the current



crisis, including poverty, climate change and oppression, in all its forms. Our partners are working to improve quality of life, economic prospects and awareness of rights within local communities, so people have fewer reasons to leave their homes, their families and their livelihoods.

While there are no easy answers to this crisis, we are all called to do what we can in response. Please consider donating to our Syria Appeal, and join us in praying for the situation.

A prayer

Creator of all:

For people who are displaced,
may they find a safe refuge.

For people who have lost control of their lives,
may they know a sure foundation.

For people who live in fear,
may they be given a strong fortress.

For people who are disillusioned,
may they have hope in a future.

Loving Father, in times of crisis, sorrow and uncertainty
we ask that you draw near.

Amen

THE WORLD GOES POP

The global story of pop art, with works from Latin America, Asia and the Middle East, showing how different countries and cultures responded to the movement. Runs from 24 September 2015 to 24 January 2016 at the Tate Modern, Bankside, London SE1. Email: Tate.org.uk.



TITIAN AT APSLEY HOUSE

See paintings by the artist recently revealed from under layers of dirt and varnish. Runs from 24 September to 31 October 2015 at Apsley House, Hyde Park Corner, London W1. Email: english-heritage.org.uk.





Conference 2016 is coming to London

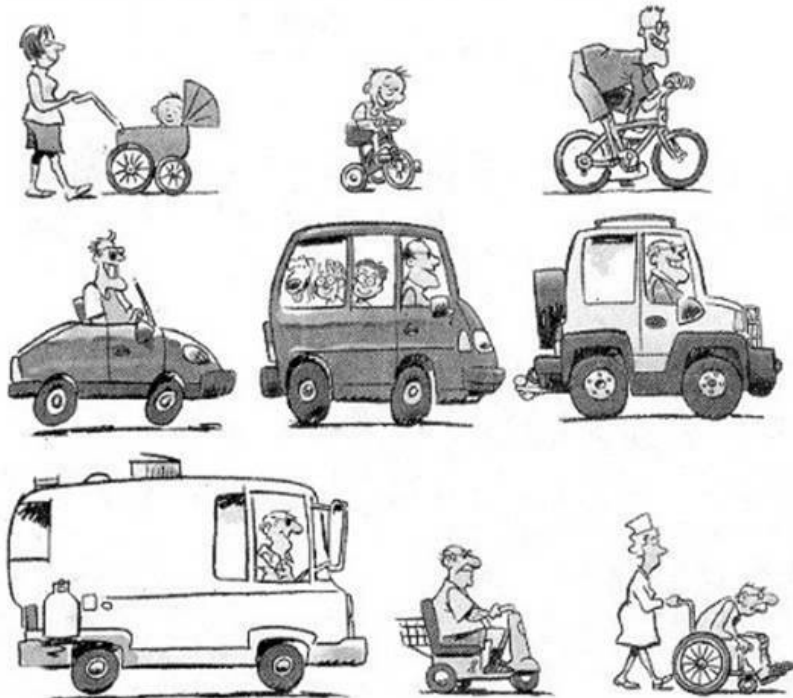
The Methodist Conference will be coming back to London next year and we need your help!

Every year scores of volunteers help to make the Methodist Conference run smoothly, serving in a variety of different ways.

If you would like to find out more about how you could get involved, please contact [Carole Booth](mailto:caroleabooth@hotmail.com).

e-mail: caroleabooth@hotmail.com

The Wheels of Life



Submitted by Janet Smith

5 Reasons Children Should Be in the Main Service Regularly By Tamera Kraft

I am an advocator of children's church. I always have been. It is important to have children's services that appeal to their age group for a variety of reasons. That being said, there is a movement in many churches today to always have children separated from adults. Although children should have a children's church where they can learn and worship God, they also need to regularly be in the main service with the rest of the church body.

What regularly means will vary from church to church. In the churches where I was on staff, it meant once a month and always in special services. Other churches, because of the complications involved, may elect to do it once a quarter. I don't think it should ever be less than once a quarter. Here's 5 reasons I believe children should regularly be in the main service:

Children should not be removed from the main body for convenience sake. This is one reason churches remove children. They want a professional church service where adults can enjoy the worship without being disrupted by noisy children. This sounds good, but the Book of Acts never talks about having a professional service nor does the Bible talk about meeting our own selfish needs during church, but it does talk about children not being pushed aside.

Matthew 19: 14 Jesus said, "Let the little children come to me, and do not hinder them, for the kingdom of heaven belongs to such as these."

Children are a part of the Body of Christ. There is nowhere in the Bible where it says children are a separate body. They are an important part of the church and shouldn't always be excluded when the church meets.

During the Feast of Tabernacles, all of Israel would come before the Lord to hear the reading of the Law so that the children would hear it and learn to fear the Lord. In Paul's letters to the Ephesians, he gave instructions directly to the children to obey their parents. He considered them a part of the church that he was writing to.

Children need Godly examples of how to worship. If children never see adults in the main service worshipping, they won't know how to worship or what is expected of them.

Children need to feel like they are a part of the church community. If children are always separated from the body of Christ, they will never feel like they are a part of the church community. And the members of

the church will never get to know the children and be an example to them unless they work in children's ministry.

Children who don't feel like a part of the church community will leave church when they're older. Imagine the culture shock of a child who has been in church all of his life but has never been in the main service. He has played games every Sunday, sang active songs, and had every message or Bible story illustrated with a skit, object lesson, or interactive device.

Suddenly the child turns 10, or 12, Or in some cases, 18 years old. He has graduated to big church. The music is strange. There are no games, skits, or illustrations, only some guy he's never met preaching for a half hour or longer. He doesn't know any of the people. And there's no candy.

Get the picture? That's what happens to a child who is never in the main service. Within a few months, maybe even a few weeks, he decides he doesn't want to be there. If his parents make him stay, he'll leave as soon as he turns 18. If not, he'll leave sooner.

He'll look for a church that entertains him and isn't boring. If he doesn't find one, he'll drop out of church. This may be why so many young people are no longer attending church. They never were a part of the church.

Tamera Kraft has 30 years experience in children's ministry and founded Revival Fire Kids Ministry in 2007 in her hometown of Akron, Ohio. Tamera received the Church of God National Children's Leader's Association Shepherd's Cup in 2007 for lifetime achievement and advancement in children's ministry. Tamera has taught in national workshops and has conducted kid's crusades, church camps, and children's camp meeting services as well as consultations and teacher training for a number of churches.

Commentary

I came across this article on the internet and thought it worthy of sharing! People of my generation, more often than not, attended Services with our parents of a Sunday morning, followed by Separate Sunday school in the afternoon, during childhood and adolescence.

I contend, that this is probably a reason why those of us who belong to a faith, still attend church regularly. But apart from that, my faith has sustained, me through the glad and sad times in my life, and by attending

church, one can not only have fellowship, with one another, but increase their spirituality.

Could the fact that Children, no longer are involved in the main service, in the same way, be one of the reasons why more adolescents, young and middle age children, no longer attends church in greater numbers?

Perhaps, this is partly true, but although the church is doing more and more to make it possible for worship and inclusiveness of these age groups in other ways, much more effort needs to be made, in order, to stem the flow away, from our pews/ chairs!

We were brought up in an era, when we did not have access to technology, and some of us had neither Radio's, nor TV'S. In fact, the only machines, I had in my home, was a wind up- {His Master's Voice} gramophone, a pedal Singer, Sewing machine and a large clock!

We played games, did athletics at school and join clubs, but did not have all the technological equipment nor social media, that the missing groups from our congregation, are constantly engaged in. It must be our concern, about what it is that will sustain them, when they climb the heights, or the going gets rough!

It would be useful to see the impact of our year's program of service-'**We make the Road by Walking**', in a feedback at the end of the year!

Blossom Jackson



31 October

All Hallows Eve - or Holy Evening - Halloween

Modern Halloween celebrations have their roots with the Celtic peoples of pre-Christian times. In those long-ago days, on the last night of October, the Celts celebrated the Festival of Samhain, or 'Summer's End'. The priests, or Druids, performed ceremonies to thank and honour the sun. For there was a very dark side to all this: Samhain also signalled the onset of winter, a time when it was feared that unfriendly ghosts, nature-spirits, and witches roamed the earth, creating mischief. So the Druid priests lit great bonfires and performed magic rites to ward off or appease these dark supernatural powers.

Then the Romans arrived, and brought their Harvest Festival which honoured the Goddess Pomona with gifts of apples and nuts. The two festivals slowly merged. When Christianity arrived still later, it began to replace the Roman and Druid religions. 1 November - All Saints' Day - was dedicated to all Christian Martyrs and Saints who had died. It was called 'All Hallows' Day'. The evening before became an evening of prayer and

preparation and was called 'All Hallows' Eve', The Holy Evening, later shortened to 'Halloween'.

For many centuries, however, fear of the supernatural remained strong. During the Middle Ages, animal costumes and frightening masks were worn to ward off the evil spirits of darkness on Halloween. Magic words and charms were used to keep away bad luck, and everybody believed

that witches ride about on broomsticks. Fortune telling was popular, and predicting the future by the use of nuts and apples was so popular

that Halloween is still sometimes known as Nutcrack Night or Snap-Apple Night.

Today, Christians have learned to turn to prayer instead of charms to overcome the powers of darkness. And the deeper, true meaning of All Hallows' Eve, should not be forgotten. As Christians, we all draw closer to Christ when we remember and give thanks for our loved ones and for others who have gone before us through the gates of death.





A teenage boy had just passed his driving test and inquired of his father as to when they could discuss his use of the car.

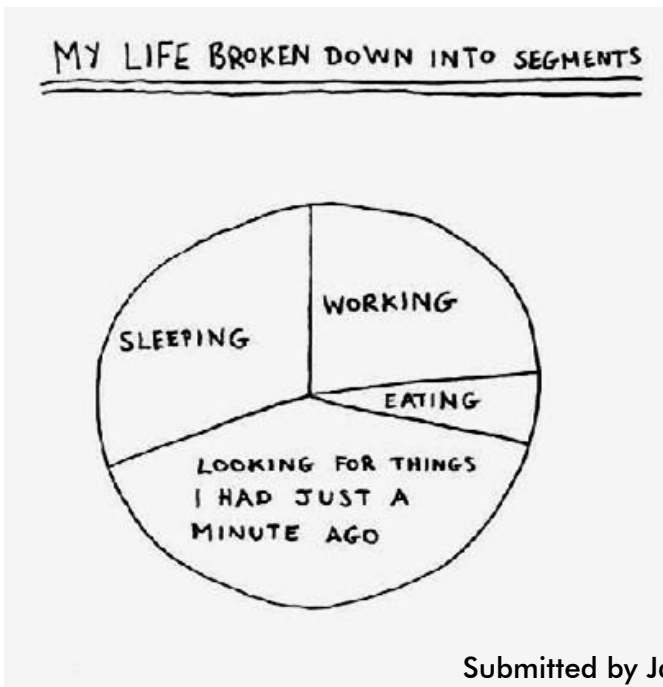
His father said he'd make a deal with his son, "You bring your grades up from a C to a B average, study your Bible a little and get your hair cut. Then we'll talk about the car."

The boy thought about that for a moment, decided he'd settle for the offer and they agreed on it. After about six weeks his father said, "Son, you've brought your grades up and I've observed that you have been studying your Bible, but I'm disappointed you haven't had your hair cut."

The boy said, "You know, Dad, I've been thinking about that, and I've noticed in my studies of the Bible that Samson had long hair, John the Baptist had long hair, Moses had long hair, and there's even strong evidence that Jesus had long hair."

(You're going to love the Dad's reply!)

"Did you also notice that they all walked everywhere they went?"



Submitted by Janet Smith

Strength for the Journey

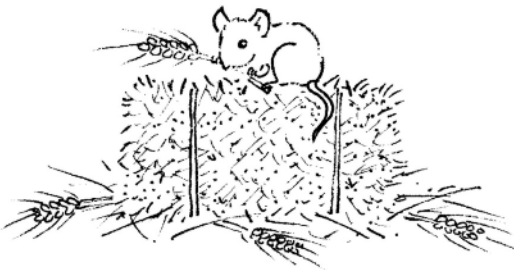
This is the title of a book aimed at people with mid to late-stage dementia, whether this is caused by Alzheimer's Disease, Parkinson's Disease, vascular problems or a range of other conditions.

Traditional books, magazines and newspapers become too complicated, but even those with late stage dementia are still able to enjoy beautiful pictures and short texts.



The books produced by 'Pictures To Share' aim to provide an enjoyable activity and help to calm and relax, reduce boredom and depression, encourage reminiscence and help deal with difficult behaviour. They are endorsed by health professionals and are designed to provide enjoyment and improve communication. Strength for the Journey includes a selection of simple yet powerful pictures and texts that can provide spiritual comfort for older people who have a Christian faith. It is also a great reminder for those who were brought up with daily Christian school assemblies and Sunday School.

It's a large format hardback book for £20 + £3 p & p. Other books are also available, including At the Seaside and The Countryside. Tel: 01829 770024 or see picturestoshare.co.uk where it is possible to look through the books before purchasing.





EDITH CAVELL

Edith Cavell was a British nurse in charge of a hospital in Belgium during the First World War. She saved the lives of soldiers from both sides and helped Allied soldiers escape from German-occupied Belgium during the First World War, for which she was arrested.

Her strong Christian beliefs led her to help all those who needed it: she said, "I can't stop while there are lives to be saved."

Despite international pleas for mercy, she was shot by a German firing squad. The night before her execution, she told the Revd. Gahan, the Anglican chaplain who gave her Holy Communion: "Patriotism is not enough. I must have no hatred or bitterness towards anyone."

In the Anglican Church, 12th October is her commemoration day. This year Nurse Cavell is featured on a special £5 coin to mark the centenary of the war.



PROPER POORLY

In the Middle Ages certain saints were associated with particular ailments, and became known as patron saints for people suffering from those illnesses. Can you guess who you might have asked to pray for you...

If you had toothache?

Dentista Apollonia Peter

If you had a migraine?

Aspren Aspirin Anthony

If you had a sore throat?

Blaise Flannel Godelina

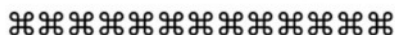
If you had sore knees?

Neale Gangulphus Sebaldu

Worst of all, if you got the plague...

Agricola Adrian Quirinius

Answers at the bottom of the page.



Doctor, Doctor I feel like I'm biscuits!

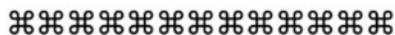
You mean the square ones?

Yes!

The ones you put butter on?

Yes!

Oh, you're crackers!



Answers: 1. Apollonia 2. Aspren (honestly!) 3. Both Blaise and Godelina 4. Gangulphus 5. all of them

EVENTS AT KINGSDOWN

OCTOBER

- Mon 5 8.00 pm Guides (most Mondays throughout the month)
Tue 6 2.00 pm Kingsdown Club - Music and Anecdotes with Graham
Wed 7 1 pm Babies & Toddlers commences (weekly) (term time only)
Thu 8 3.30 pm - 5.30 pm CBSI UK Bible Studies in the Foyer
Fri 9 10.15 am Coffee Morning in Foyer - everyone welcome
BOYS BRIGADE 6.30-7.30 pm Anchor Boys, 6.30-8.00 pm
Junior Section, 7.30-10.00 pm Company Section (most
Fridays throughout month)
Sat 10 10.00 am to 12 noon Coffee & Chat - everyone welcome
Tue 13 Liz & Steve Palmer's Home Group
Sat 17 7 pm Barn Dance at Kingsdown
Sun 18 Circuit Bible Study at Kingsdown
Tue 20 2.00 pm Kingsdown Club - a Bingo & Quiz Afternoon
7.30 pm Circuit Policy Committee at Kingsdown
Sat 31 10.0-12.30 Book Fair at Kingsdown - with cakes/gifts/bric-a
-brac/Raffle. Admission 40p. Proceeds to MHA

NOVEMBER

- Sun 1 6 pm Circuit Bible Study at Kingsdown
Sat 14 BB Battalion Show - William Perkins School
Sun 18 6 pm Circuit Bible Study at Kingsdown

Next Kingsdown Church Council Meeting Tuesday, 1 December.



The views expressed in articles in The Messenger are not necessarily those of Kingsdown Methodist Church or the Editors.

Data Protection - Kingsdown Methodist Church maintains a database of basic information relating to members and the community roll. Keep the Minister informed of any changes to your personal details. The database is maintained in accordance with the guidelines of The Trustees for Methodist Church Purposes, Central Buildings, Oldham Street, Manchester M1 1JQ to whom any formal requests for access to the data must be addressed.